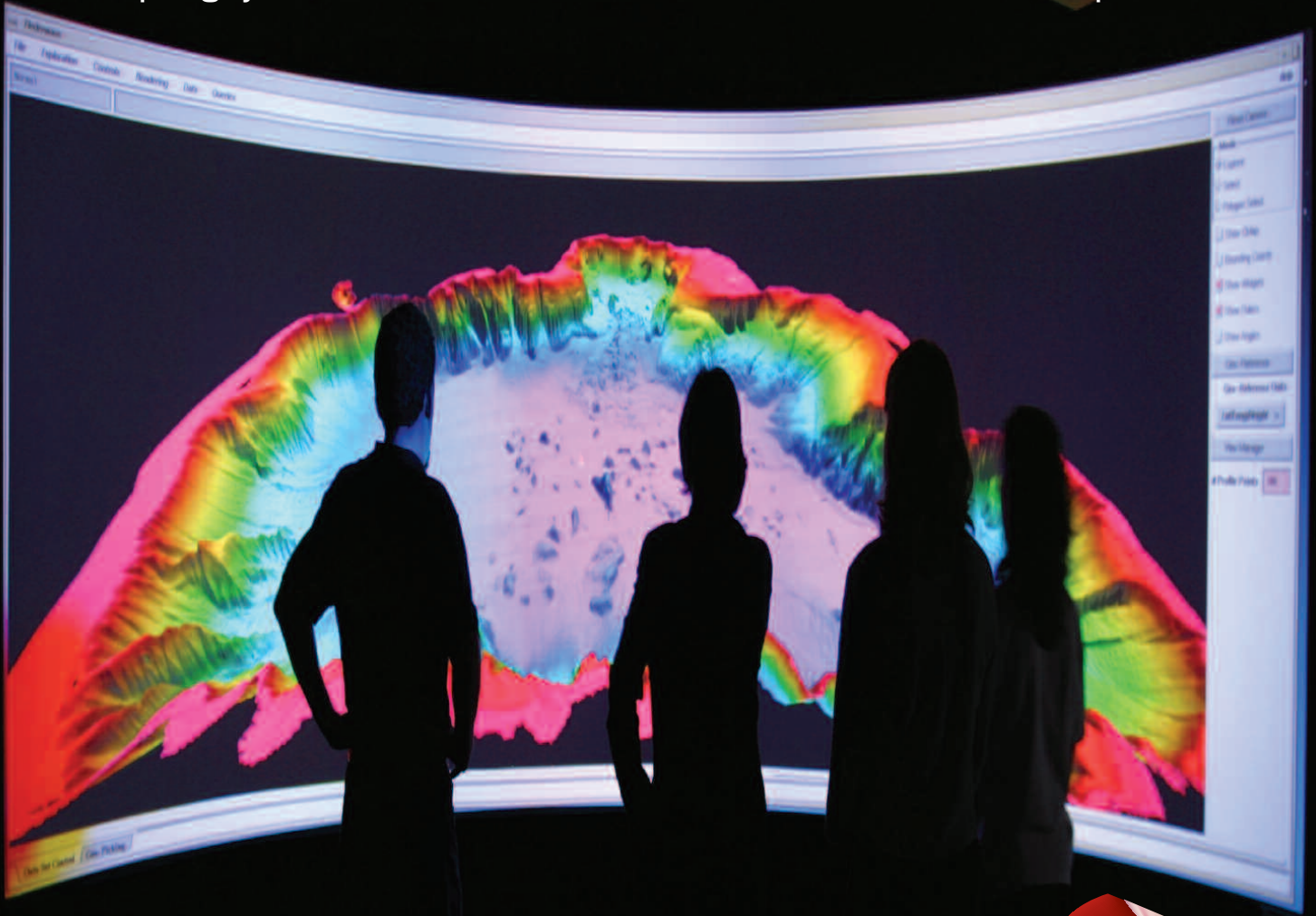


iVIEW

keeping you in touch with the latest news and updates



6.4 update
release now
available

New UK

New headquarters and new faces for fledermaus

FM Training

Successful training
course for BGS

Port of London

FM used to create images
as never seen before

Route Planner

In the right direction
for a success story

New IVS 3D UK headquarters opens

Successful FM training course for BGS

In January this year IVS 3D Ltd conducted a training course for The British Geological Survey (www.bgs.ac.uk) at their headquarters in Keyworth near Nottingham. BGS use Fledermaus in a number of departments across their series of offices in the UK. The course was an opportunity for BGS staff to get together and share Fledermaus experiences, as well as learn improved techniques to deal with their increasing amount of data.

During the week, staff learned the power of Fledermaus in handling large data volumes, as well as general processing, visualisation and producing final deliverable products. Highlighted during the course were the different requirements of data interpretation to be obtained from the same data set for different users. Therefore some training time was allocated during the tailored course, to address the issues that included slope gradient interpretation and the visualisation of sub bottom profile sections.

The training was concluded with all participants learning to 'fly' with the IVS 3D Bat hardware device, which allowed them 6 degrees of freedom when maneuvering around a complicated Fledermaus Scene. For further information on the 'Bat' please visit www.ivs3d.com



IVS 3D, Inc., provider of the Fledermaus 3D visualisation software, announced today that it has opened a regional headquarters in the United Kingdom to service the growing demand for the company's processing, QC and analysis software solutions in Europe, Middle East and Africa. The UK office expands IVS 3D's ability to offer local sales and support services to its fast growing base of customers and prospects in the region.

Government agencies, commercial companies and universities in Europe have been strong adopters of the Fledermaus software in their ocean mapping analysis and processing solutions. Fledermaus has proven to be critical for improving efficiency and reliability in the quality control and automated processing of high-resolution multibeam sonar data.

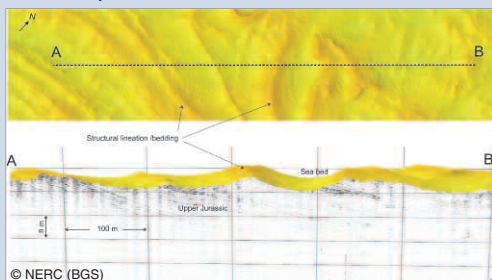
"We have seen a significant growth in our customer base and level of interest in the Fledermaus products across the ocean mapping industry" said Lindsay Gee, CEO of IVS 3D, Inc. "Our customers have made a commitment to our products, and to support their efforts we are expanding our local European resources. The UK office will allow us to deliver superior sales and support to our customers in Europe, the Middle East and Africa."

Duncan Mallace, Managing Director of the IVS 3D Ltd. UK office said, "I am very excited to be working even more closely with IVS 3D and establishing Fledermaus as not only the market leader in 3D visualisation, but also to see it become the standard in visualisation worldwide."

Contact details for the UK office:

IVS 3D Ltd. Oathill Farm, Cropredy, Banbury, Oxon OX17 1QA, UK

Tel: +44 1295 750 631 Email: info@ivs3d.co.uk



A corridor with a boomer profile in Upper Jurassic in the Eastern English Channel. With ridges on the sea bed associated with dipping beds of rock.

Academia still enjoying FM pricing policy

IVS 3D continue to believe in the importance of supporting Academic research at all levels. In order to assist Universities, Colleges and Research Organizations, IVS 3D plan to continue, indefinitely, the Academic Discount Scheme which allows a wide band of users to benefit from significantly reduced cost licenses and maintenance support.

Maintenance renewals

A record number of Fledermaus users still continue to renew their annual maintenance subscription. This facility enables users the benefit of enjoying continued upgrades of latest Fledermaus Version Releases, in addition to Patch upgrades. Significantly, renewal into the Maintenance Program also gives users direct access to the Support and Licensing Departments of IVS 3D. If your maintenance has lapsed or you wish more information on the Program, please contact your local IVS 3D representative for the options available to you.

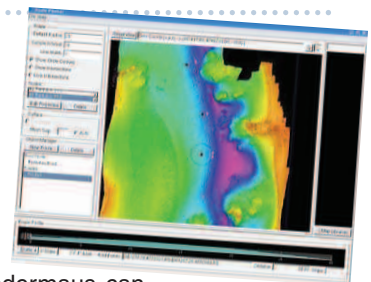
Release of 6.4 continues development to new levels

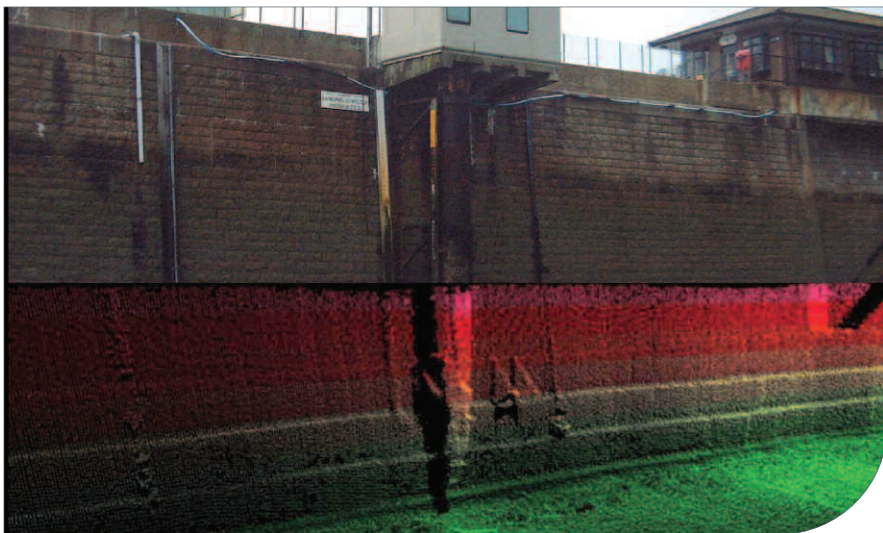
IVS 3D was proud to announce the release of Fledermaus Version 6.4 in February 2007. The latest release has improved features and functionality as well as significant 64bit and Intel Mac compatibility.

The primary benefit of 64 bit technology is that Fledermaus can now take advantage of more memory for loading and working with data, thus the ability to run natively on a 64-bit system. This provides speed advantages as well as even larger data sets. Version 6.4 also allows the ability to export data and auto launch Google Earth.

The real time Vessel Manager module has also been enhanced with a library of vessels, ROV and AUV's to either 'fly' over an existing Fledermaus Scene, or allows Real time navigation input, giving actual absolute visualisation from onboard a vessel.

To be added to IVS 3D mailing list and to be kept updated with Fledermaus version releases, please refer to www.ivs3d.com





Port of London as never seen before

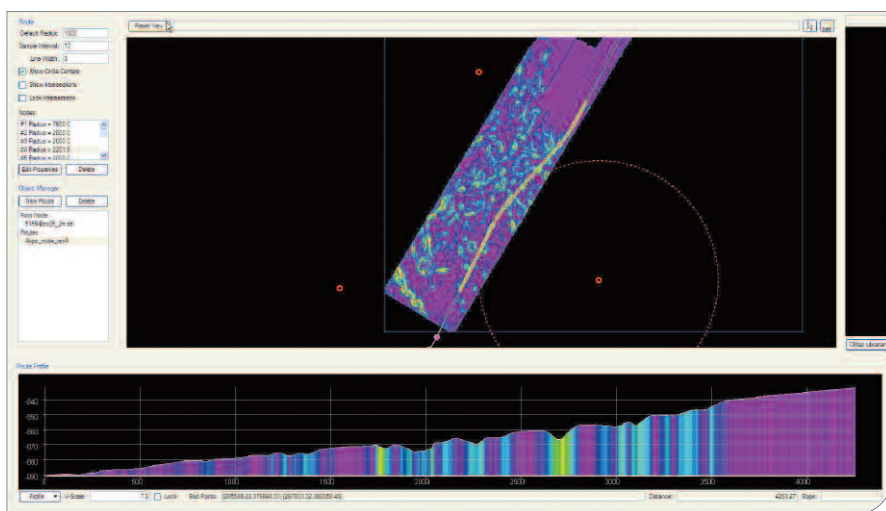
The Port of London Authority (www.pla.co.uk/hydrographic) are using Fledermaus in new innovative ways, that pioneers new methodology in the Port and Harbour environment. Such an example shown above, highlights the use of point cloud multibeam data set against raster vertical images. Using the point cloud data allows PLA to compare the imagery from their high resolution multibeam with other survey techniques used within the Port.

Fledermaus easily allows visualisation and quantifiable measurements from different sources of data, therefore allowing users to combine land survey, terrestrial photogrammetry, laser scanning, and bathymetric data in one package.

The final data set is then distributed to interested parties by using the free iView3D viewer, which allows the PLA clients, contractors or other interested parties to view the Fledermaus data in full interactive 3D mode. The ability for PLA client and contractor to see the detail and easily interpret results of surveys, has led to more efficient port operations as well as increased survey activity for the Hydrographic department.

To download the free Fledermaus iView3D product please visit www.ivs3d.com.

Route Planner A revolutionary success



Although best known for Fledermaus Standard and Fledermaus Professional products, in 2006 IVS 3D introduced Fledermaus Route Planner, in order to meet client demand in the field of Pipeline or Cable Engineering. Route Planner enjoys all the functionality of the Professional product, except for data QC and Area Based Editing capability.

Recent releases have introduced the ability to export a route as a navigation file that can be read in by VesselManager which then allows you to check for LBL array intervisibility prior to pipelay activity. Further more, users can now turn a route into a 3D pipe object in Fledermaus. This is done using the new "linetomodel" command line applet. The user can customise the cable or pipe diameter as required.

meet the team

John Fraser Sales Manager

email: john.fraser@ivs3d.co.uk

mobile: +44(0) 7779 302865



IVS 3D Ltd, has appointed John Fraser as Regional Sales Manager for Europe, Middle East and Africa (EMEA). John holds a B.Sc (Hons) in Topographic Science from the University of Glasgow, and initially worked offshore as a

Hydrographic Surveyor for two years before joining RESON. During his time in RESON, John initially worked as part of the global field support department, but in the last five years as Business Development Manager for RESON and was responsible for sales in the UK, and latterly in the past three years for India and Pakistan.

John comments, that in recent years, it has become apparent that with the increasing data volumes from both multibeam and Lidar systems, clients now require high capacity software for the processing, QC and visualizing of geospatial data. In addition clients wish to introduce data from different origins, for example sidescan; sub bottom profile; seismic or magnetometer. As regional manager for the European, Middle East, and Africa regions, John will provide direct sales and support service to clients using the Fledermaus suite of software. He will also be focusing on expanding distribution channels and developing new applications for Fledermaus.

In his spare time John is a keen golfer and skier, and while not on the course in summer or slopes in winter he enjoys following his local football team Inverness Caledonian Thistle.

Should you wish to contact John, he can be reached by email on john.fraser@ivs3d.co.uk or mobile +44(0) 7779302865

IVS 3D Ltd.
Oathill Farm, Cropredy, Banbury
Oxon OX17 1QA UK

contact us



IVS 3D Ltd.
Oathill Farm
Cropredy
Banbury, Oxon
OX17 1QA
UK

Tel: **+44 1295 750 631**
Email: info@ivs3d.co.uk

Sales

Tel: **+44 1295 750 631**
Email: sales@ivs3d.co.uk

Support

Tel: **+44 1295 750 631**
Email: support@ivs3d.co.uk

upcoming events

IHO XVIIth Conference

7-10 May - Monaco www.iho.shom.fr

US Hydro 2007

14-17 May - Norfolk, Virginia www.thsoa.org

Oceans 07

8-21 June - Aberdeen www.oceans07ieeaberdeen.org

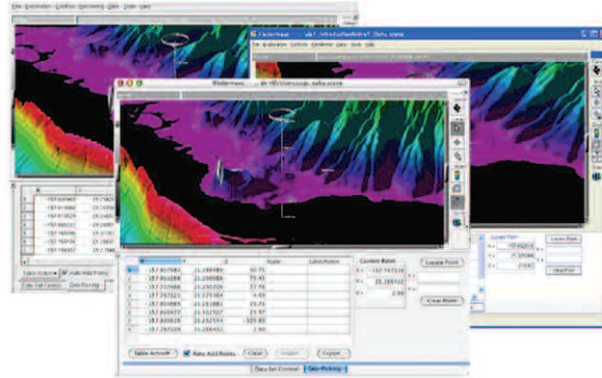
Hydro Society of South Africa – Technical Awareness Seminar 07

19th -21st June - Cape Town www.hydrosa.co.za

UUVS (Unmanned Underwater Vehicle Showcase)

26-27 Sept - Southampton www.uuvs.net

Fledermaus software



IVS 3D's flagship Fledermaus product line is used worldwide by commercial, academic and military clients. They use the software to interact with massive geographical datasets of numerous data types for ocean mapping and land based projects. The intuitive 3D display and interaction allows clients to rapidly gain insight and extract more information from their underlying data. This provides our clients with added value in data processing efficiency, quality control accuracy, data analysis completeness, and project integration, which promotes clear communication. The extensive functionality of Fledermaus allows its use across many phases of a project from the planning, processing and QC, through to analysis and production of images, plots and animations.

Fledermaus comes with two products suites: Fledermaus Standard - the base modules of the dynamic data visualisation and analysis package and Fledermaus Professional, which includes all the Standard capabilities plus a powerful and comprehensive Area Based Editing capability, real-time vessel tracking module, and a pipeline and cable route planning tool.

Fledermaus standard

The Fledermaus visualisation software is a powerful interactive 3D data visualisation system for a variety of applications including swath bathymetry editing and quality control, environment impact assessment, mining, geology, cable laying and dredge planning among other things. If you need to add area based editing or tracking and visualisation of realtime data, then you might consider the Professional Edition, which builds on the functionality of the Standard Edition.

Fledermaus professional

The Professional Edition builds on the Standard Edition providing all of its functionality along with additional Fledermaus data types and new data analysis programs. This edition provides full support for area based data editing, route planning and real-time visualisation and monitoring applications. Associated support applications include pfmDirect, route planner, ROVManager, and crosscheck (point vs surface analysis), among others.

iView 3D

iView3D is a freely available application that provides basic 3D interaction exploration and geo-coordinate display for any data set or scene prepared with the Fledermaus visualisation system. This allows you to distribute your work in a manner that anyone can use.

IVS products are available across many platforms including Windows, Linux, Mac OS X, SGI, and Sun workstations (see our Platforms Overview page). You do not need to buy the software for a specific machine configuration.