

A Remarkable Year of Growth



Lindsay Gee— CEO

Welcome to our newsletter! Here you will find topics related to 3D visualization and the award winning Fledermaus software suite. Whether it is a new feature, training tip, or an upcoming event, we hope that you will find something useful and interesting in these

pages.

With the passing of our 10 year anniversary, we are looking forward to making further innovative strides in the realm of 3D visualization. With the recent release of 6.3, we have increased the number of formats supported by Fledermaus as well as increased rendering time. For more information on the new 6.3 features, see page 3.

Fledermaus continues to contribute to projects all over the world, whether it is as part of a tsunami early warning system or mapping

the ocean floor for pipeline placement. You can see some of the work Fledermaus has helped to accomplish on page 2.

I would like to thank all of our clients and partners for their continued support and confidence. Check our list of upcoming events— we hope to see you there!

Cheers-

Lindsay Gee

Points of Interest:

- [FM on the Front Cover of NATURE](#)
- [Events Calendar](#)
- [Upcoming Training](#)
- [New features in 6.3](#)

Inside this issue:

<i>Users in the News-</i>	2
<i>FM on the Front Cover of NATURE</i>	
<i>New Release!</i>	2
<i>FM FAQ's</i>	3
<i>FM: How to</i>	3
<i>Training Updates</i>	4
<i>Events Calendar</i>	4

The Latest Addition to our IVS Team!

We are extremely excited to welcome our new Product Specialist, Erin Heffron at our Portsmouth, NH—USA office.

“As the number of Fledermaus users continues to grow, we are also seeing an expansion in the number of ways our customers are using Fledermaus. With Erin’s background we can expand our training program as well as working with our existing clients to improve their Fleder-

maus experience.” said Bill McKernan, Director of Marketing & Sales.

Erin graduated from Slippery Rock University of Pennsylvania with a Bachelor degree in Environmental Studies.

After graduation, Erin worked on several projects with USGS at Woods Hole where she did work involving habitat mapping and invasive species. While at USGS, she also saw how Fleder-

maus was used in several projects, including display with their Geo Wall.

“I am eager to see how people in different disciplines and industries are using Fledermaus, and I am looking forward to finding ways to help them improve the process.” said Erin. “I am already seeing how different application within Fledermaus can be used for extensive analysis.”



Erin Heffron— Product Specialist for IVS 3D.



Users in the News– Fledermaus on Front Cover of *Nature*



Photo courtesy of Dr Martin Jakobsson of Stockholm University

As featured on the June 1, 2006 issue of Nature, Fledermaus was used to create the front page image which depicts the Lomonosov Ridge in the Arctic Ocean. The image was created by Dr. Martin Jakobsson of Stockholm University.

A long time Fledermaus user, Dr. Jakobsson has been using Fledermaus since it was first introduced to him in 1995. Since then, he has used FM in almost

all of the projects that he has worked on, including his recent participation in a major multinational scientific cruise to the Lomonosov Ridge.

“Fledermaus Professional was especially valuable to me because we were able to merge all the geophysical site survey data prior to the actual expedition, saving us time and resources. In addition, I used the Vessel Manager application to obtain the positions of the drilling vessel in the Arctic Ocean and the supporting icebreakers live in relation to the geophysical database. This was done while we were in the live drilling operation, again saving us time and resources. FM enabled us to bring in sea ice information from satellite images and helicopter observations. Once we started the coring/ drilling, we placed an object resembling the drill in 3D within the scene. By looking at the penetration of the seismic sections, which were part of the site survey

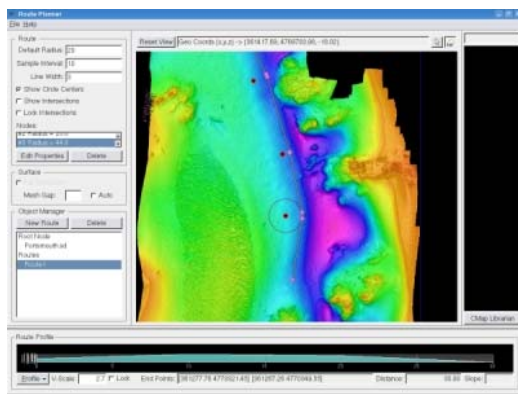
geophysical database, we could see how we were doing in terms of penetrating the sediment stratigraphy. “said Dr. Jakobsson. “To be able to merge all data in 3D helped us a lot regarding critical decision making. Once the ship crew and expedition leaders noticed how valuable this was, I was moved to sit on the best position of the bridge, not bad at all, considering I had the best lookout location for everything including polar bears!”

Dr. Jakobsson continues to use Fledermaus in the post-cruise work of this expedition. Currently, he is working on an Arctic Ocean bathymetric model for the Early Miocene (ca 18 million years ago) which will be analyzed in FM. “With even more gridding functionality in Average Gridder, I will be able to move even more of my work into the Fledermaus Suite!” stated Dr. Jakobsson.

“Once the ship crew and expedition leaders noticed how valuable this was, I was moved to sit on the best position of the bridge...”

-Dr. Martin Jakobsson on the value of Fledermaus.

New release! 6.3 now available for download



Screen shot of Route planner as seen in 6.3

As part of the continued drive for further innovation, IVS has released its latest version, v6.3.

This release combines a number of new features and data parsers along with general improvements and fixes throughout the software suite. The complete switch to a new image handling library will provide both increased

speed and better memory usage, especially for Windows users. These enhancements are available both when reading and writing very large image files.

To download this latest update, visit www.ivs3d.com and select downloads from the support menu.



FM How to: New Licensing Tool available in v6.3

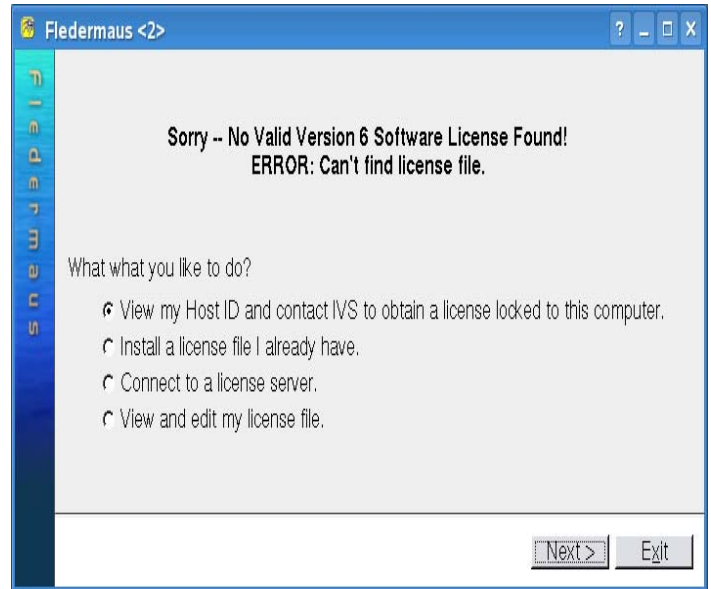
With the new release of Fledermaus 6.3, IVS has introduced a new feature that will make it easier to install the Fledermaus license file.

After installing Fledermaus 6.3, when the software is first run it will check for a license file. If the license file hasn't already copied over to the proper directory an error will appear as seen to the right.

To set up a license file that has been saved in a directory on your computer, se-

lect the second radio button "Install a license file I already have". Once the "Next" button is clicked, a pop-up window will appear where you can browse to the location where the license file has been saved. Browse to the location and click Open. Click on Save to overwrite the license file; (by default the Fledermaus installation automatically creates a temporary License.dat file which you can overwrite).

You have now successfully installed Fledermaus v6.3!



License file error as seen in v6.3.

Fledermaus FAQ's

Q: How can I calculate Volumes for a specific area of my surface?

A: First, load the surface into Fledermaus. Then, create a plane at suitable elevation (height) (if you wish to further constrain you volume calculations or do not have a second surface) Then, in FM select Geo - picking mode. Pick points around area to create a poly.

Create the 3D line object to check that picks are as you want and save Geo-picking table ie. (Export *.xyz). Then select Tools > Surface Difference.

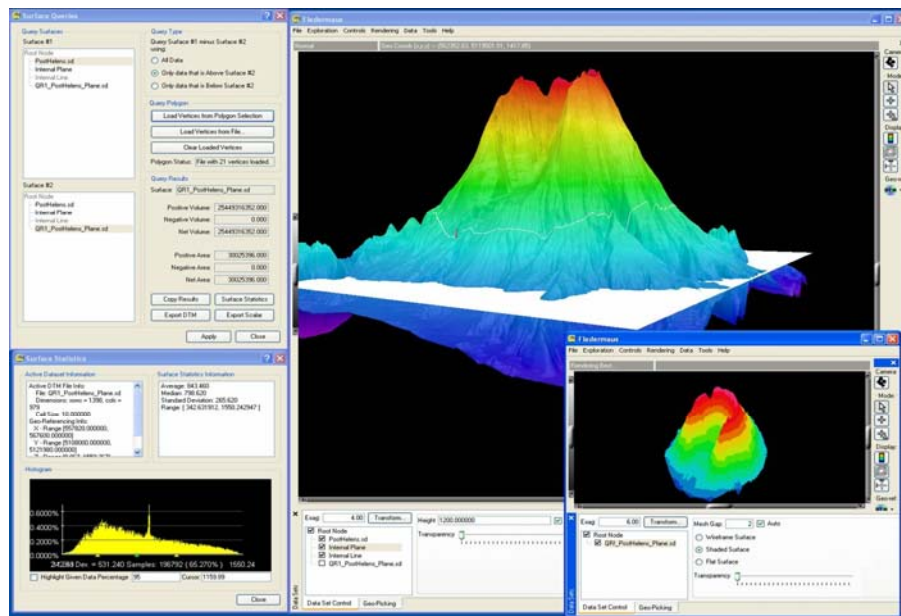
For Surface #1 select your Surface. For Surface #2 select the created Plane.

For the Query Type select Only data above Surface

#2 For Query Polygon select Load Vertices from File and select recently created *.xyz Apply

Q: In Fledermaus how do I create a geo-tiff from my object or scene file?

A: The simplest way is to use Map Sheet (Fledermaus > Tools > Create Map > Sheet > Export Map Sheet and select for Image Type Geo-TIFF



Surface query as seen in 6.3

Visit us on the
 Web for the
 Latest News,
 Events or
 Downloads!
www.ivs3d.com

IVS was founded in 1995 to provide interactive 3D visualization and analysis software and services for the ocean mapping industry. Since then it has become the market leader in the provision of interactive 3D visualization and analysis software for marine information.

The Fledermaus software suite enables commercial, academic and military clients mapping the oceans to interact with massive geographical datasets of numerous data types. The software has been used extensively across the ocean industry in geological surveys, hydrographic surveys, mine clearance and beach landing surveys; and a variety of geo-hazard surveys in support of offshore engineering projects worldwide.

For more information on how Fledermaus can help you to present your data intuitively, with better quality and less analysis time, please visit our website.

IVS Events Calendar



IVS booth in conjunction with NetSurvey at OI 06 in London.

Event	Booth #	Location	Date
GIS for the Coastal Zone: Spatial Data, Modeling and Management		Wollongong and Sydney, New South Wales, Australia	July 12 - 16, 2006
Rio Oil & Gas 2006		Rio de Janeiro, Brazil	Sept 11 - 14, 2006
International Petroleum Congress and Exposition		Cancun, Mexico	Aug 30 - Sep 3, 2006
Oceans 2006	315	Boston, MA	Sept 18- 22, 2006
GCAGS 2006	410	Lafayette, LA	Sept 25-27, 2006
Hydro		Antwerp	Nov 6-9, 2006
AGU		San Francisco, CA	Dec 11-15, 2006

Fledermaus Training

IVS 3D offers client specific customized training as well annual workshop series. Hundreds of users have successfully participated in both the privately tailored and public Fledermaus training workshops over the years. In most cases we can bundle training for special purposes to enable our customers a timely and efficient project launch.

If you are interested in discussing what training options are best for your organization, please contact us. Additional online training is also available at our website. There you can download the training modules and data sets for self study purposes.

IVS 3D, Inc
 325 Corporate Dr., Suite 175
 Suite 175
 Portsmouth, NH 03801

Phone: 603-431-1773
 Fax: 603-766-0485
 Email: info@ivs3d.com

